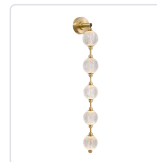


## MARNI WV321005-UNV-010

FIXTURE DIMENSIONS	W4-3/8" x H38-1/4" x E7"
HEIGHT FROM CENTER	36"
EXTENSION	7"
LIGHT SOURCE	LED with DC Driver
WATTAGE	26W
TOTAL LUMENS	1800lm
DELIVERED LUMENS	NB-1615lm*; PN-1580lm*;
VOLTAGE	120-277V
COLOR TEMPERATURE	3000K
CRI (RA)	90CRI
DIMMABLE	Yes, TRIAC/ELV (Not Included) or 0-10V Dimmer (Optional, Not Included)
DIFFUSER DETAILS	Clear Carved Acrylic
MATERIAL	Aluminum + Steel
ILLUMINATION DIRECTION	Omni-directional
INSTALL OPTIONS	Wall Mount, Down Only
LOCATION	Damp
CANOPY DIMENSIONS	D4-3/4" x E2"
PAINT FINISH	NB01; PN01;

[ D - Diameter, L - Length, W - Width, H - Height, E - Extension ]

### AVAILABLE FINISHES:



WV321005NB-UNV-010  
Natural Brass



WV321005PN-UNV-010  
Polished Nickel

\*For complete warranty terms, please visit: [www.aloralighting.com/warranty](http://www.aloralighting.com/warranty)

